

Green

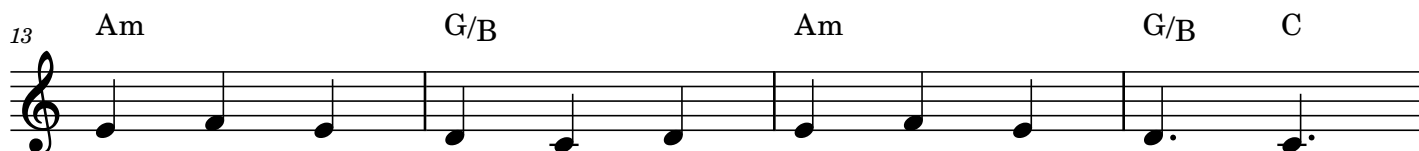
♩ = 156



When win-ter's gray is on the sky, rust u - pon the
Wav - ing de - fi - ant pine tree boughs, ce - dar need - les,
Death may raise its voice to - day; O, but Life will
So keep it in your win - ter store, hang its gar - land

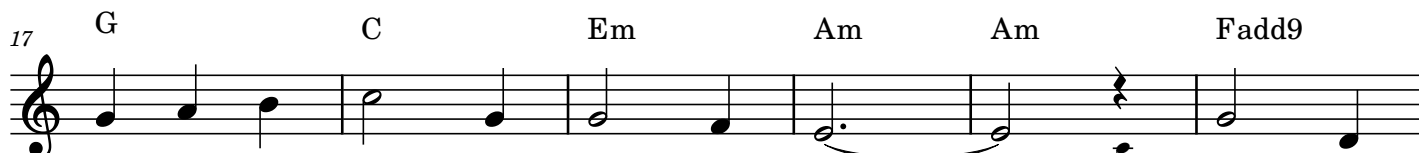


leaves that lie, red on the last few ber - ries cling - ing,
stub-born and proud, hid - ing in - side the seeds of sum - mer,
have its say, speak - ing in lov - ers and in chil - dren,
'round the door, grant to your heart its hope - ful prom - ise,



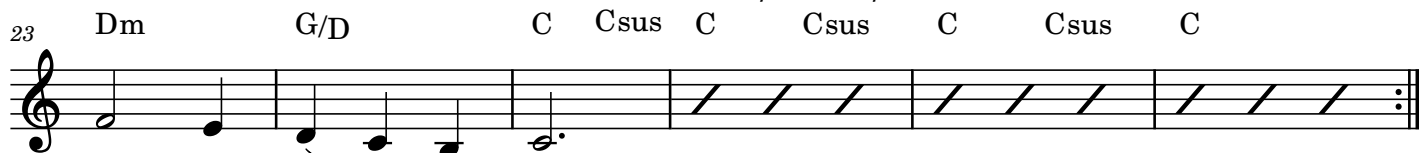
brown on the branch where the bit - ter wind's sing - ing—
deep in the root where it sleeps un - der cov - er—
in po - ets' pens and phil - os - o - phers' vis - ions.
fash - ion a wreath for its bles - sing up - on us.

Intro begins here



E - ven when white ob - scures the scene, still, in
Pa - tient - ly wait - ing there un - seen, in the
Life is a plan - et's dar - ing dream: Earth's de -
Win - ter brings browns and grays in - deed; but when it

optional repeat between verses



win - ter, there is green.
win - ter, there is green.
-vo - tion, spo - ken in green.
comes, re - mem - ber green.

Arrangement Permissions

👉 One-time Adaptation

👍 New Arrangement OK

🚫 Seek permission to arrange

Look at the Sing Out Love "Permissions" section for further explanation

Green

♩ = 156



When win-ter's gray is on the sky, rust u - pon the
Wav-ing de - fi - ant pine tree boughs, ce - dar need - les,
Death may raise its voice to - day; O, but Life will
So keep it in your win - ter store, hang its gar - land

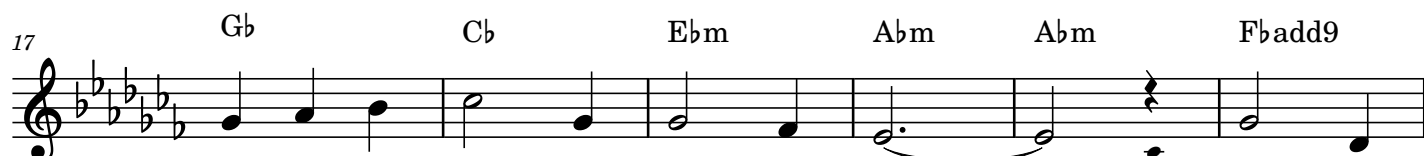


leaves that lie, red on the last few ber - ries cling - ing,
stub-born and proud, hid - ing in - side the seeds of sum - mer,
have its say, speak-ing in lov - ers and in chil - dren,
'round the door, grant to your heart its hope - ful prom - ise,



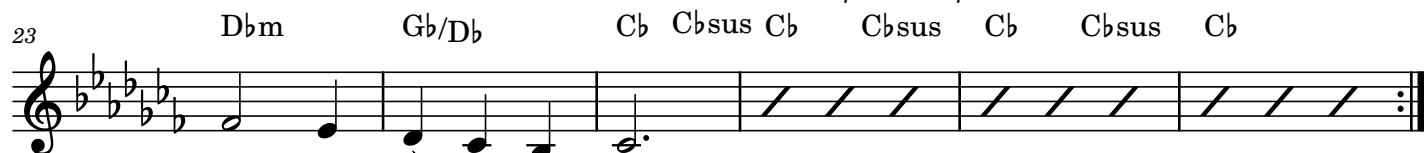
brown on the branch where the bit - ter wind's sing - ing—
deep in the root where it sleeps un - der cov - er—
in po - ets' pens and phil - os - o - phers' vis - ions.
fash - ion a wreath for its bles - sing up - on us.

Intro begins here



E - ven when white ob - scures the scene, still, in
Pa - tient - ly wait - ing there un - seen, in the
Life is a plan - et's dar - ing dream: Earth's de -
Win - ter brings browns and grays in - deed; but when it

optional repeat between verses



win - ter, there is green.
win - ter, there is green.
-vo - tion, spo-ken in green.
comes, re - mem - ber green.

Arrangement Permissions

👉 One-time Adaptation

👍 New Arrangement OK

🚫 Seek permission to arrange

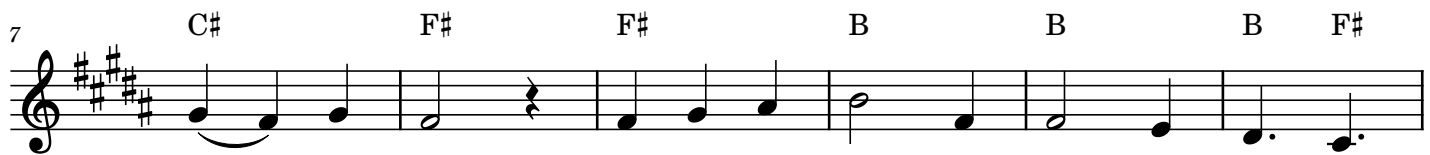
Look at the *Sing Out Love* "Permissions" section for further explanation

Green

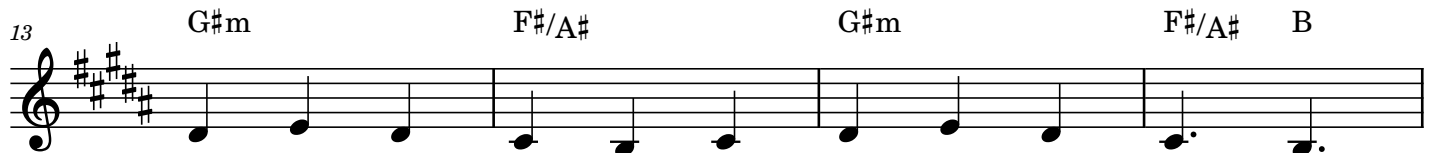
♩ = 156



When win-ter's gray is on the sky, rust u - pon the
Wav-ing de - fi - ant pine tree boughs, ce - dar need - les,
Death may raise its voice to - day; O, but Life will
So keep it in your win - ter store, hang its gar - land

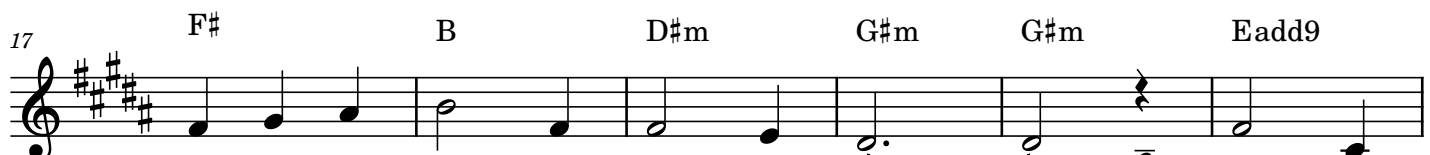


leaves that lie, red on the last few ber - ries cling - ing,
stub-born and proud, hid - ing in - side the seeds of sum - mer,
have its say, speak-ing in lov - ers and in chil - dren,
'round the door, grant to your heart its hope - ful prom - ise,



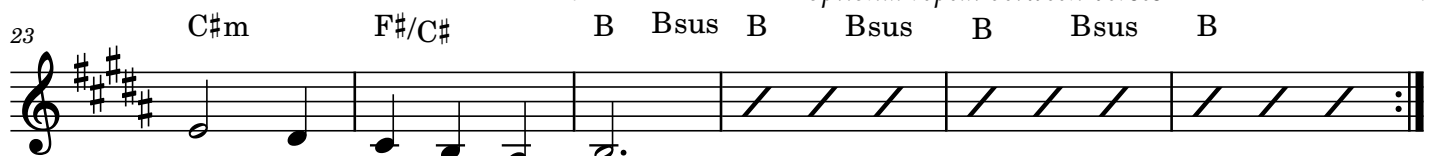
brown on the branch where the bit - ter wind's sing - ing—
deep in the root where it sleeps un - der cov - er—
in po - ets' pens and phil - os - o - phers' vis - ions.
fash - ion a wreath for its bles - sing up - on us.

Intro begins here



E - ven when white ob - scures the scene, still, in
Pa - tient - ly wait - ing there un - seen, in the
Life is a plan - et's dar - ing dream: Earth's de -
Win - ter brings browns and grays in - deed; but when it

optional repeat between verses



win - ter, there is green.
win - ter, there is green.
-vo - tion, spo - ken in green.
comes, re - mem - ber green.

Arrangement Permissions

👉 One-time Adaptation

👍 New Arrangement OK

🚫 Seek permission to arrange

Look at the Sing Out Love "Permissions" section for further explanation

Green

♩ = 156

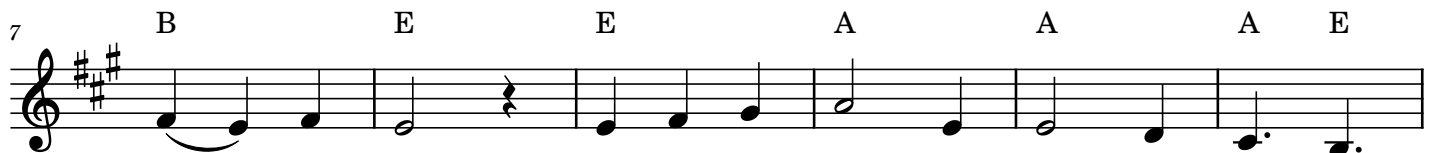


Green

♩ = 156



When win-ter's gray is on the sky, rust u - pon the
Wav-ing de - fi - ant pine tree boughs, ce - dar need - les,
Death may raise its voice to - day; O, but Life will
So keep it in your win - ter store, hang its gar - land

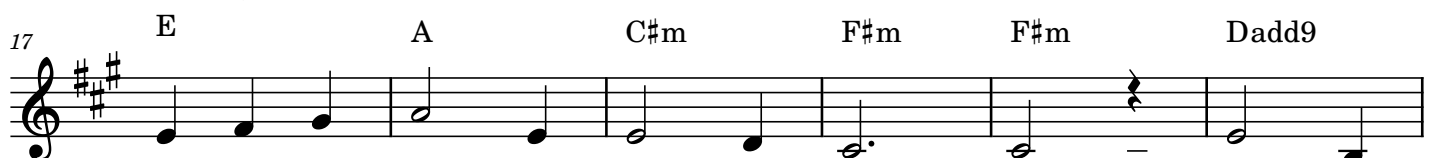


leaves that lie, red on the last few ber - ries cling - ing,
stub-born and proud, hid - ing in - side the seeds of sum - mer,
have its say, speak-ing in lov - ers and in chil - dren,
'round the door, grant to your heart its hope - ful prom - ise,

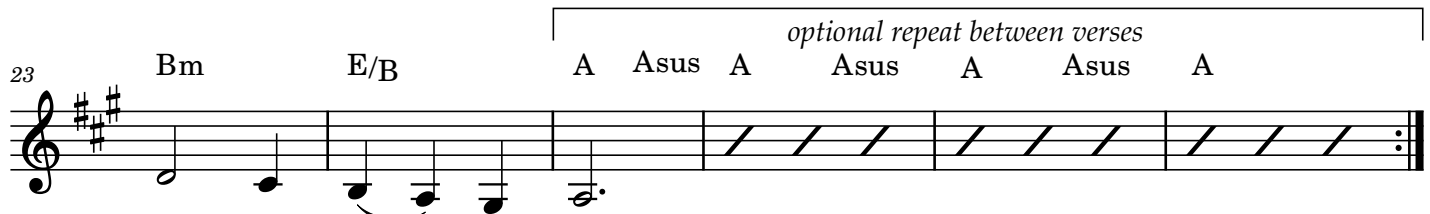


brown on the branch where the bit - ter wind's sing - ing—
deep in the root where it sleeps un - der cov - er—
in po - ets' pens and phil - os - o - phers' vis - ions.
fash - ion a wreath for its bles - sing up - on us.

Intro begins here



E - ven when white ob - scures the scene, still, in
Pa - tient - ly wait - ing there un - seen, in the
Life is a plan - et's dar - ing dream: Earth's de -
Win - ter brings browns and grays in - deed; but when it



win - ter, there is green.
win - ter, there is green.
-vo - tion, spo - ken in green.
comes, re - mem - ber green.

Words: Peter Mayer, b.1963

Music: Traditional French Carol

Arr. Peter Mayer & Adam Podd, b.1986

© Peter Mayer & Adam Podd

Sing Out Love expiration December 2028

Arrangement Permissions

👉 One-time Adaptation

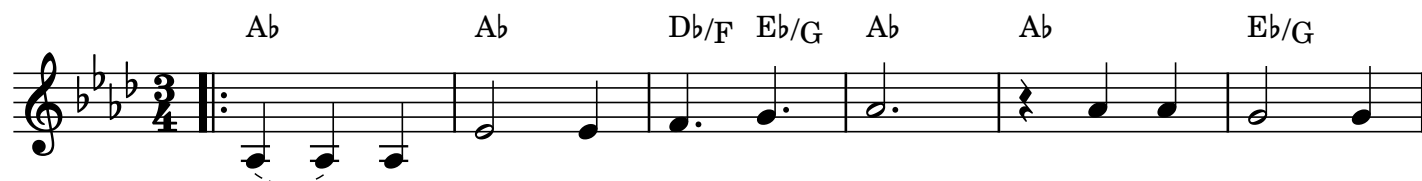
👍 New Arrangement OK

🚫 Seek-permission-to-arrange

Look at the *Sing Out Love* "Permissions" section for further explanation

Green

♩ = 156



When win-ter's gray is on the sky, rust u - pon the
Wav-ing de - fi - ant pine tree boughs, ce - dar need - les,
Death may raise its voice to - day; O, but Life will
So keep it in your win - ter store, hang its gar - land



leaves that lie, red on the last few ber - ries cling - ing,
stub-born and proud, hid - ing in - side the seeds of sum - mer,
have its say, speak-ing in lov - ers and in chil - dren,
'round the door, grant to your heart its hope - ful prom - ise,



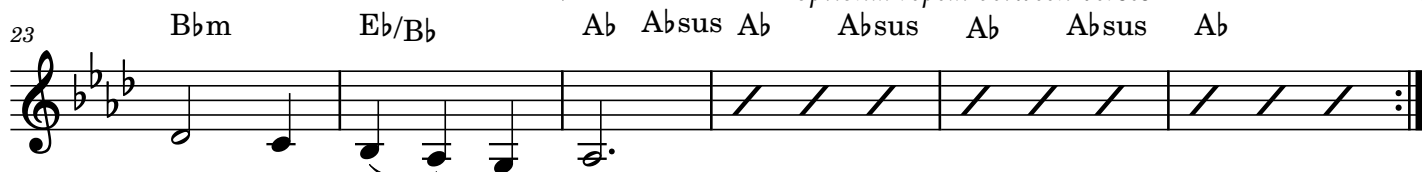
brown on the branch where the bit - ter wind's sing - ing—
deep in the root where it sleeps un - der cov - er—
in po - ets' pens and phil - os - o - phers' vis - ions.
fash - ion a wreath for its bles - sing up - on us.

Intro begins here



E - ven when white ob - scures the scene, still, in
Pa - tient - ly wait - ing there un - seen, in the
Life is a plan - et's dar - ing dream: Earth's de -
Win - ter brings browns and grays in - deed; but when it

optional repeat between verses



win - ter, there is green.
win - ter, there is green.
-vo - tion, spo - ken in green.
comes, re - mem - ber green.

Words: Peter Mayer, b.1963

Music: Traditional French Carol

Arr. Peter Mayer & Adam Podd, b.1986

© Peter Mayer & Adam Podd

Sing Out Love expiration December 2028

Arrangement Permissions

👉 One-time Adaptation

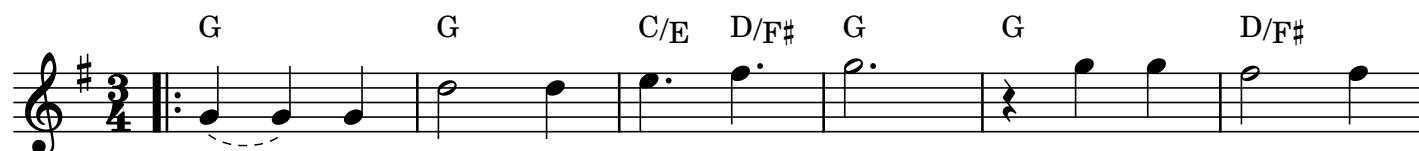
👍 New Arrangement OK

🚫 Seek permission to arrange

Look at the Sing Out Love "Permissions" section for further explanation

Green

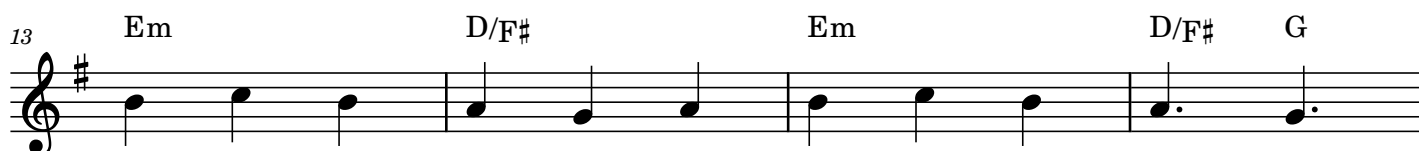
♩ = 156



When win-ter's gray is on the sky, rust u - pon the
Wav-ing de - fi - ant pine tree boughs, ce - dar need - les,
Death may raise its voice to - day; O, but Life will
So keep it in your win - ter store, hang its gar - land



leaves that lie, red on the last few ber - ries cling - ing,
stub-born and proud, hid - ing in - side the seeds of sum - mer,
have its say, speak-ing in lov - ers and in chil - dren,
'round the door, grant to your heart its hope - ful prom - ise,

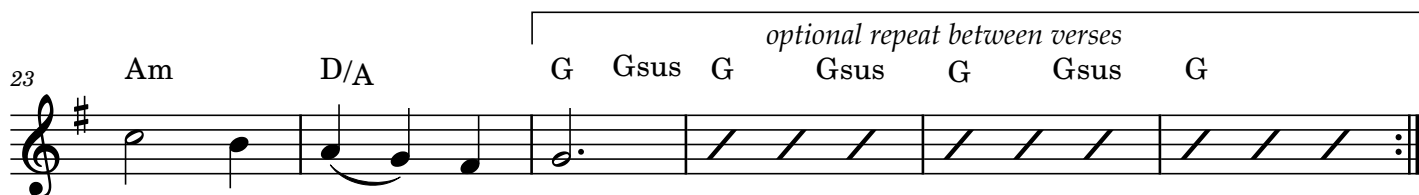


brown on the branch where the bit - ter wind's sing - ing—
deep in the root where it sleeps un - der cov - er—
in po - ets' pens and phil - os - o - phers' vis - ions.
fash - ion a wreath for its bles - sing up - on us.

Intro begins here



E - ven when white ob - scures the scene, still, in
Pa - tient - ly wait - ing there un - seen, in the
Life is a plan - et's dar - ing dream: Earth's de -
Win - ter brings browns and grays in - deed; but when it



win - ter, there is green.
win - ter, there is green.
-vo - tion, spo - ken in green.
comes, re - mem - ber green.

Arrangement Permissions

👉 One-time Adaptation

👍 New Arrangement OK


🚫 Seek-permission-to-arrange

Look at the *Sing Out Love* "Permissions" section for further explanation

Green

$\bullet = 156$

When win-ter's gray is on the sky, rust u - pon the
Wav-ing de - fi - ant pine tree boughs, ce - dar need - les,
Death— may raise its voice to - day; O, but Life will
So keep it in your win - ter store, hang its gar - land

7 

leaves that lie, red on the last few ber - ries cling - ing,
 stub-born and proud, hid - ing in - side the seeds of sum - mer,
 have__ its say, speak-ing in lov - ers and in chil - dren,
 'round the door, grant to your heart its hope - ful prom - ise,

13 E♭m D♭/F E♭m D♭/F G♭



Detailed description: This block shows measures 13 through 17 of the musical score. Measure 13 is marked with a treble clef and a key signature of three flats (Bb, Eb, Ab). The notes are Bb3, Eb3, Ab3, and Bb3. Measure 14 has the same notes. Measure 15 has the same notes. Measure 16 has the same notes. Measure 17 has the same notes. The lyrics 'E♭m', 'D♭/F', 'E♭m', 'D♭/F', and 'G♭' are written above measures 13, 14, 15, 16, and 17 respectively.

brown on the branch where the bit - ter wind's sing - ing—
 deep in the root where it sleeps un - der cov - er—
 in po - ets' pens and phil - os - o - phers' vis - ions.
 fash - ion a wreath for its bles - sing up - on us.


Intro begins here

17 D \flat G \flat B \flat m E \flat m E \flat m C \flat add9

The image shows measures 17 through 22 of the song 'The Sound of Silence' in the key of D-flat major. Measure 17 starts with a treble clef and a key signature of two flats (B-flat and E-flat). The notes are D-flat (quarter), E-flat (quarter), and F (quarter). Measure 18 has a G-flat (half). Measure 19 has a B-flat (half). Measure 20 has an E-flat (half). Measure 21 has an E-flat (half). Measure 22 has a C-flat (half) and a G-flat (quarter), with a sharp sign indicating the end of the phrase.

E - ven when white ob - scures the scene,_____ still, in
Pa - tient - ly wait - ing there un - seen,_____ in the
Life is a plan - et's dar - ing dream:_____ Earth's de -
Win - ter brings browns and grays in - deed;_____ but when it

23 Abm Db/Ab G^b G^bsus G^b *optional repeat between verses* G^bsus G^b G^bsus G^b



win - ter, there_ is green.
win - ter, there_ is green.
-vo - tion, spo-ken in green.
comes, re - mem - ber green.


🎵 Words: Peter Mayer, b.1963
 Music: Traditional French Carol
 Arr. Peter Mayer & Adam Podd, b.1986
 © Peter Mayer & Adam Podd
 Sing Out Love expiration December 2028

Arrangement Permissions

👉 One-time Adaptation

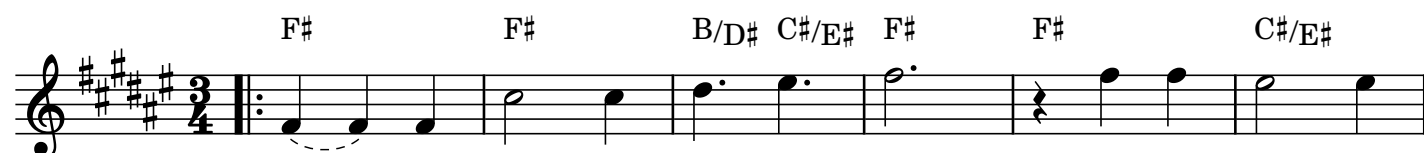
👍 New Arrangement Ok

~~Seek permission to arrange~~

Look at the *Sing Out Love* “Permissions” section for further explanation 

Green

♩ = 156



When win-ter's gray is on the sky, rust u - pon the
Wav-ing de - fi - ant pine tree boughs, ce - dar need - les,
Death may raise its voice to - day; O, but Life will
So keep it in your win - ter store, hang its gar - land

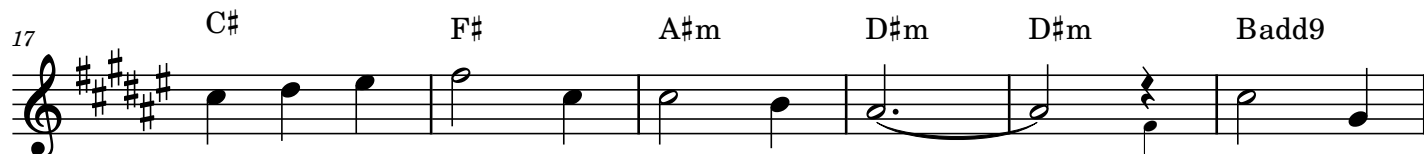


leaves that lie, red on the last few ber - ries cling - ing,
stub-born and proud, hid - ing in - side the seeds of sum - mer,
have its say, speak-ing in lov - ers and in chil - dren,
'round the door, grant to your heart its hope - ful prom - ise,



brown on the branch where the bit - ter wind's sing - ing—
deep in the root where it sleeps un - der cov - er—
in po - ets' pens and phil - os - o - phers' vis - ions.
fash - ion a wreath for its bles - sing up - on us.

Intro begins here



E - ven when white ob - scures the scene, still, in
Pa - tient - ly wait - ing there un - seen, in the
Life is a plan - et's dar - ing dream: Earth's de -
Win - ter brings browns and grays in - deed; but when it



win - ter, there is green.
win - ter, there is green.
-vo - tion, spo-ken in green.
comes, re - mem - ber green.

Arrangement Permissions

👉 One-time Adaptation

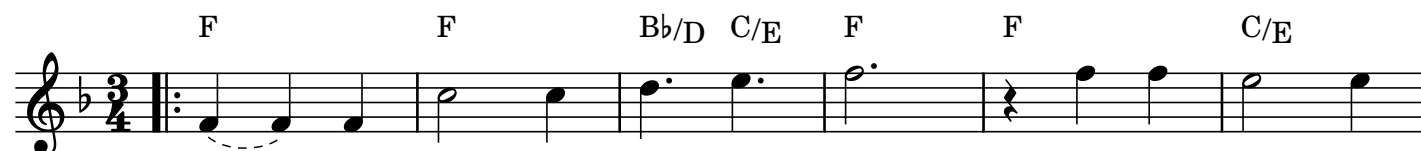
👍 New Arrangement OK

🚫 Seek permission to arrange

Look at the *Sing Out Love* "Permissions" section for further explanation

Green

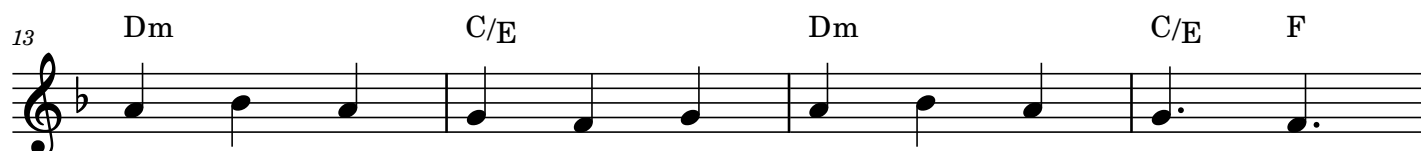
♩ = 156



When win - ter's gray is on the sky, rust u - pon the
Wav - ing de - fi - ant pine tree boughs, ce - dar need - les,
Death may raise its voice to - day; O, but Life will
So keep it in your win - ter store, hang its gar - land



leaves that lie, red on the last few ber - ries cling - ing,
stub-born and proud, hid - ing in - side the seeds of sum - mer,
have its say, speak - ing in lov - ers and in chil - dren,
'round the door, grant to your heart its hope - ful prom - ise,

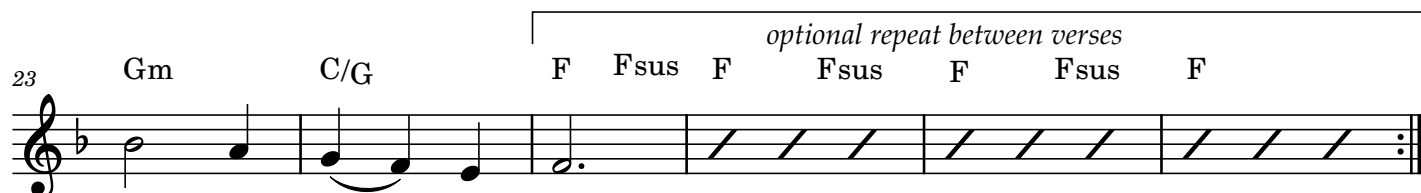


brown on the branch where the bit - ter wind's sing - ing—
deep in the root where it sleeps un - der cov - er—
in po - ets' pens and phil - os - o - phers' vis - ions.
fash - ion a wreath for its bles - sing up - on us.

Intro begins here



E - ven when white ob - scures the scene, still, in
Pa - tient - ly wait - ing there un - seen, in the
Life is a plan - et's dar - ing dream: Earth's de -
Win - ter brings browns and grays in - deed; but when it



win - ter, there is green.
win - ter, there is green.
-vo - tion, spo - ken in green.
comes, re - mem - ber green.

Arrangement Permissions

👉 One-time Adaptation

👍 New Arrangement OK

🚫 Seek permission to arrange

Look at the *Sing Out Love* "Permissions" section for further explanation

Green

♩ = 156



When win-ter's gray is on the sky, rust u - pon the
Wav-ing de - fi - ant pine tree boughs, ce - dar need - les,
Death may raise its voice to - day; O, but Life will
So keep it in your win - ter store, hang its gar - land

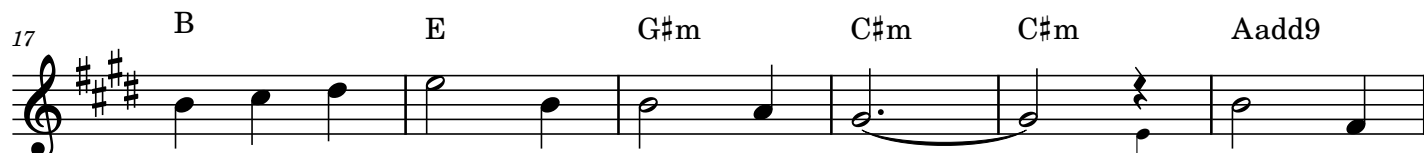


leaves that lie, red on the last few ber - ries cling - ing,
stub-born and proud, hid - ing in - side the seeds of sum - mer,
have its say, speak-ing in lov - ers and in chil - dren,
'round the door, grant to your heart its hope - ful prom - ise,

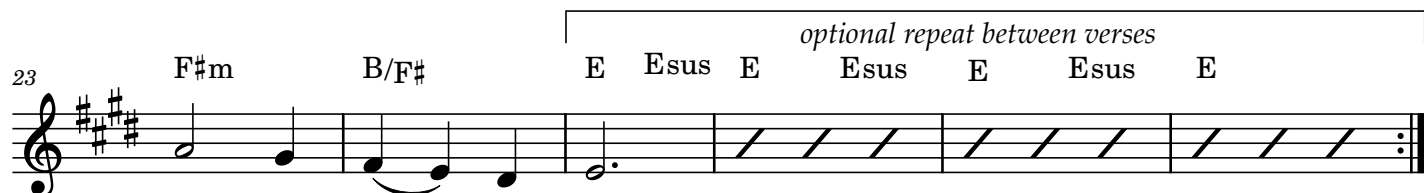


brown on the branch where the bit - ter wind's sing - ing—
deep in the root where it sleeps un - der cov - er—
in po - ets' pens and phil - os - o - phers' vis - ions.
fash - ion a wreath for its bles - sing up - on us.

Intro begins here



E - ven when white ob - scures the scene, still, in
Pa - tient - ly wait - ing there un - seen, in the
Life is a plan - et's dar - ing dream: Earth's de -
Win - ter brings browns and grays in - deed; but when it



win - ter, there is green.
win - ter, there is green.
-vo - tion, spo - ken in green.
comes, re - mem - ber green.

Arrangement Permissions

👉 One-time Adaptation

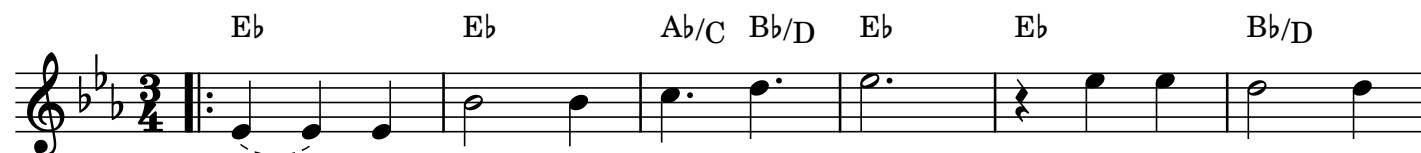
👍 New Arrangement OK

🚫 Seek permission to arrange

Look at the *Sing Out Love* "Permissions" section for further explanation

Green

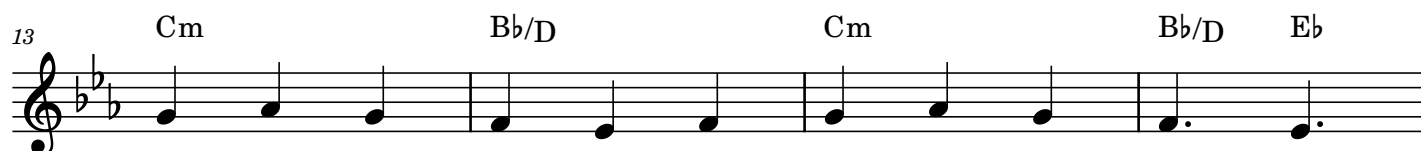
♩ = 156



When win-ter's gray is on the sky, rust u - pon the
Wav-ing de - fi - ant pine tree boughs, ce - dar need - les,
Death may raise its voice to - day; O, but Life will
So keep it in your win - ter store, hang its gar - land



leaves that lie, red on the last few ber - ries cling - ing,
stub-born and proud, hid - ing in - side the seeds of sum - mer,
have its say, speak-ing in lov - ers and in chil - dren,
'round the door, grant to your heart its hope - ful prom - ise,



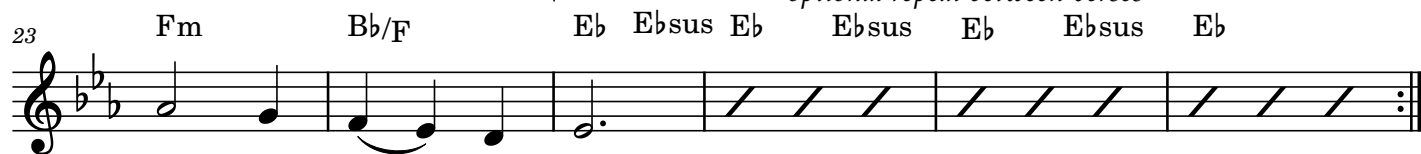
brown on the branch where the bit - ter wind's sing - ing—
deep in the root where it sleeps un - der cov - er—
in po - ets' pens and phil - os - o - phers' vis - ions.
fash - ion a wreath for its bles - sing up - on us.

Intro begins here



E - ven when white ob - scures the scene, still, in
Pa - tient - ly wait - ing there un - seen, in the
Life is a plan - et's dar - ing dream: Earth's de -
Win - ter brings browns and grays in - deed; but when it

optional repeat between verses



win - ter, there is green.
win - ter, there is green.
-vo - tion, spo - ken in green.
comes, re - mem - ber green.

Arrangement Permissions

👉 One-time Adaptation

👍 New Arrangement OK

🚫 Seek-permission-to-arrange

Look at the *Sing Out Love* "Permissions" section for further explanation

Green

♩ = 156



When win-ter's gray is on the sky, rust u - pon the
Wav-ing de - fi - ant pine tree boughs, ce - dar need - les,
Death— may raise its voice to - day; O, but Life will
So keep it in your win - ter store, hang its gar - land



leaves that lie, red on the last few ber - ries cling - ing,
stub-born and proud, hid - ing in - side the seeds of sum - mer,
have— its say, speak-ing in lov - ers and in chil - dren,
'round the door, grant to your heart its hope - ful prom - ise,

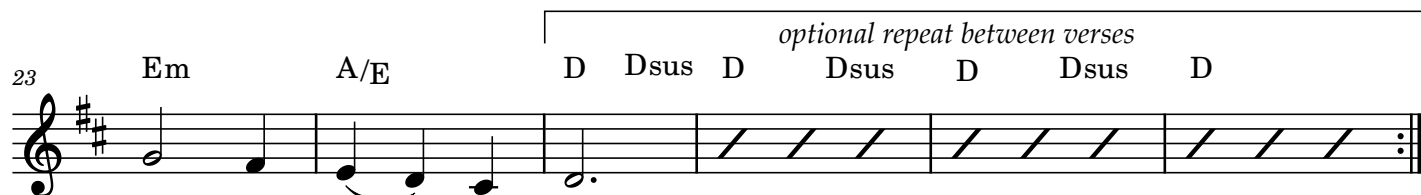


brown on the branch where the bit - ter wind's sing - ing—
deep in the root where it sleeps un - der cov - er—
in po - ets' pens and phil - os - o - phers' vis - ions.
fash - ion a wreath for its bles - sing up - on us.

Intro begins here



E - ven when white ob - scures the scene, still, in
Pa - tient - ly wait - ing there un - seen, in the
Life is a plan - et's dar - ing dream: Earth's de -
Win - ter brings browns and grays in - deed; but when it



win - ter, there— is green.
win - ter, there— is green.
-vo - tion, spo - ken in green.
comes, re - mem - ber green.

Arrangement Permissions

👉 One-time Adaptation

👍 New Arrangement OK

🚫 Seek-permission-to-arrange

Look at the Sing Out Love "Permissions" section for further explanation

Green

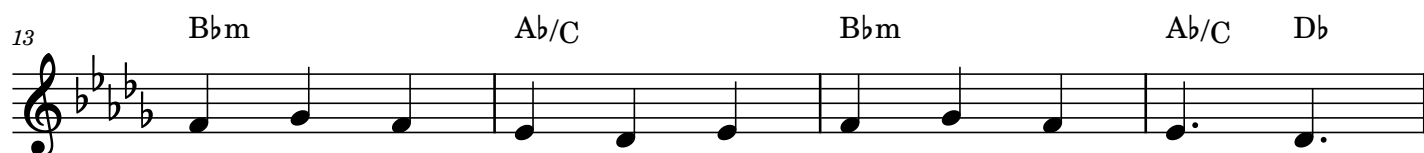
♩ = 156



When win-ter's gray is on the sky, rust u - pon the
Wav-ing de - fi - ant pine tree boughs, ce - dar need - les,
Death— may raise its voice to - day; O, but Life will
So keep it in your win - ter store, hang its gar - land



leaves that lie, red on the last few ber - ries cling - ing,
stub-born and proud, hid - ing in - side the seeds of sum - mer,
have— its say, speak-ing in lov - ers and in chil - dren,
'round the door, grant to your heart its hope - ful prom - ise,

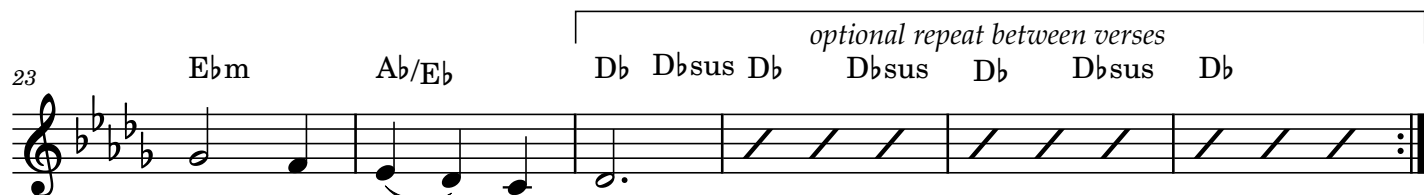


brown on the branch where the bit - ter wind's sing - ing—
deep in the root where it sleeps un - der cov - er—
in po - ets' pens and phil - os - o - phers' vis - ions.
fash - ion a wreath for its bles - sing up - on us.

Intro begins here



E - ven when white ob - scures the scene, still, in
Pa - tient - ly wait - ing there un - seen, in the
Life is a plan - et's dar - ing dream: Earth's de -
Win - ter brings browns and grays in - deed; but when it



win - ter, there— is green.
win - ter, there— is green.
-vo - tion, spo-ken in green.
comes, re - mem - ber green.

Arrangement Permissions

👉 One-time Adaptation

👍 New Arrangement OK

🚫 Seek-permission-to-arrange

Look at the *Sing Out Love* "Permissions" section for further explanation

Green

♩ = 156



When win-ter's gray is on the sky, rust u - pon the
Wav-ing de - fi - ant pine tree boughs, ce - dar need - les,
Death may raise its voice to - day; O, but Life will
So keep it in your win - ter store, hang its gar - land

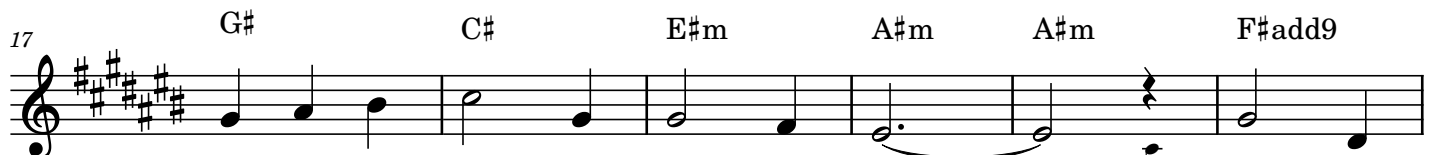


leaves that lie, red on the last few ber - ries cling - ing,
stub-born and proud, hid - ing in - side the seeds of sum - mer,
have its say, speak-ing in lov - ers and in chil - dren,
'round the door, grant to your heart its hope - ful prom - ise,

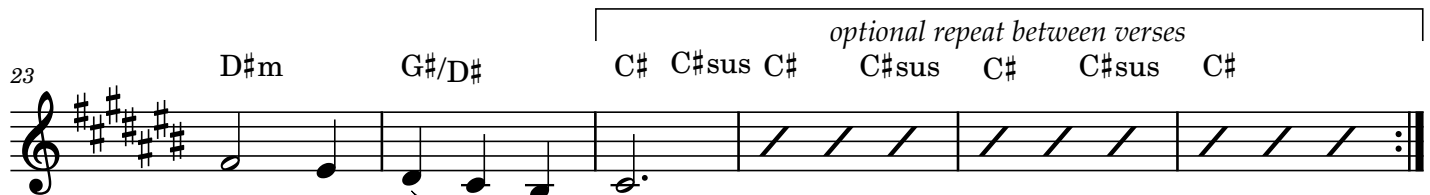


brown on the branch where the bit - ter wind's sing - ing—
deep in the root where it sleeps un - der cov - er—
in po - ets' pens and phil - os - o - phers' vis - ions.
fash - ion a wreath for its bles - sing up - on us.

Intro begins here



E - ven when white ob - scures the scene, still, in
Pa - tient - ly wait - ing there un - seen, in the
Life is a plan - et's dar - ing dream: Earth's de -
Win - ter brings browns and grays in - deed; but when it



win - ter, there is green.
win - ter, there is green.
-vo - tion, spo-ken in green.
comes, re - mem - ber green.

Arrangement Permissions

👉 One-time Adaptation

👍 New Arrangement OK

🚫 Seek-permission-to-arrange

Look at the *Sing Out Love* "Permissions" section for further explanation